

Hardscape Document

Residential Dev. At Glencarraig,
Celbridge, Co. Kildare
For Garyaron Homes Ltd.



External Works and Landscape

Elemental Specification

1580 – Residential Development at Glencarraig, Celbridge, Co. Kildare

for Garyaron Homes Ltd.

Hard Landscape Materials

SURFACE TREATMENT 1 & 2.

RMDA Ref: Dwg.01 – Landscape Masterplan.

Location: Main Distributor Road & Secondary Roads.

Material: Industrial SMA (Stone Mastic Asphalt) or similar Approved.

Build-up to Engineer's Specification.

Supplier: Roadstone - Roadstone Retail Belgard, Tallaght, Dublin, D24 PKK2. Rep. Conal Bailey
0878259470, Office 01 4041275 or equivalent.



SURFACE TREATMENT 3 – Shared Surface.

RMDA Ref: Dwg.01 Landscape Masterplan.

Location: Shared Surface Areas.

Material: Tarmacadam Hot Rolled with Coloured chip.

Size: 6-10mm Coloured Chippings on a 3-6mm fine grained dense macadam wearing course or similar approved

Build-up to Engineer's Specification.

Supplier: Roadstone - Roadstone Retail Belgard, Tallaght, Dublin, D24 PKK2. Rep. Conal Bailey
0878259470, Office 01 4041275 or equivalent.



SURFACE TREATMENT 4 – Pedestrian Footpaths.

RMDA Ref: Dwg.01 Landscape Masterplan.

Location: Pedestrian Footpaths.

Material: Concrete brushed finish with trowelled edge.

Build-up to Engineer's Specification.

Supplier: Roadstone - Roadstone Retail Belgard, Tallaght, Dublin, D24 PKK2.

Rep. Conal Bailey 0878259470, Office 01 4041275 or equivalent.

**SURFACE TREATMENT 5 – Flush Conc Kerb.**

In-situ Concrete Kerb Flush to Define Shared surface

Or similar approved.

RMDA Ref: Dwg.01. Landscape Masterplan.

Location: Roads.

Material: In-situ Concrete.

Pattern: NA.

Supplier: To Engineers Spec.

**SURFACE TREATMENT 6 – Amenity Footpath**

RMDA Ref: Dwg.01. Landscape Masterplan.

Location: Public Openspace Pedestrian Footpath.

Material: Tarmacadam.

Build-up to Engineer's Specification.



SURFACE TREATMENT - Cycle Paths.

Material: Tarmacadam (Coloured)

Build-up to Engineer's Specification.

**SURFACE TREATMENT 7 – Permeable Rustic Paving.**

RMDA Ref: Dwg.01. Landscape Masterplan.

Location: Private Driveways.

Material: Permeable Rustic Paving with 200mm Wide Natural Grey Border.

Size: 200mm x 100mm x 80mm.

Insert/Border Size 200mm x 100mm x 80mm.

Build-up to Engineer's Specification.

Pattern: Laid stretcher bond parallel to length/kerb on paving sand base. (See Engineers Spec.)

Supplier: Roadstone - Roadstone Retail Belgard, Tallaght, Dublin, D24 PKK2. Rep. Conal Bailey 0878259470, Office 01 4041275 or equivalent.

Castlestone Causeway Blend



Castlestone Natural Border

**SURFACE TREATMENT 8 – Apartment/Creche Entrance.**

RMDA Ref: Dwg.01. Landscape Masterplan.

Location: Apartment/Creche Entrance Standing Area.

Material: Natural Grey Flag Paving.

Size: 600mm x 300mm x 80mm.

Build-up to Engineer's Specification.

Pattern: Laid stretcher bond parallel to length/kerb on paving sand base. (See Engineers Spec.)

Supplier: Roadstone - Roadstone Retail Belgard, Tallaght, Dublin, D24 PKK2. Rep. Conal Bailey 0878259470, Office 01 4041275 or equivalent.



SURFACE TREATMENT 9 – Private House Entrance.

RMDA Ref: Dwg.01. Landscape Masterplan.

Location: Private House Entrance Standing Area.

Material: Natural Paving.

Size: 200mm x 100mm x 80mm.

Insert Size 200mm x 100mm x 80mm.

Build-up to Engineer's Specification.

Pattern: Laid stretcher bond parallel to length/kerb on paving sand base. (See Engineers Spec.)

Supplier: Roadstone - Roadstone Retail Belgard, Tallaght, Dublin, D24 PKK2. Rep. Conal Bailey 0878259470, Office 01 4041275 or equivalent.

**Optional Paving for Boundary Treatments 8 & 9**

RMDA Ref: See Rationale

Material: Plaza Salt Paving

Size: 300 x 150 x 80mm, 200 x 150 x 80mm.

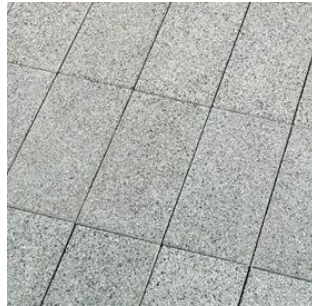
Build-up to Engineer's Specification.

Pattern: Laid stretcher bond parallel to length/kerb on paving sand base. (See Engineers Spec.)

Supplier: Acheson & Glover - 127 Crievehill Road, Fivemiletown, BT75 0SY.

Office internalsales@ag.uk.com. Sales Rep. gareth.mcbrearty@ag.uk.com

Mob: M +353 (0)87 234 1965 Web: <http://www.ag.uk.com>

**Optional Paving for Boundary Treatments 8 & 9**

Size: 300 x 150 x 80mm, 200 x 150 x 80mm.

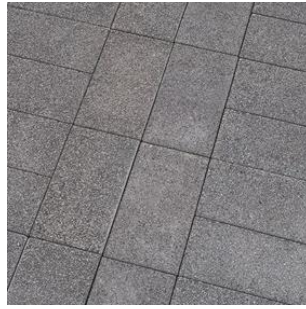
Build-up to Engineer's Specification.

Pattern: Laid stretcher bond parallel to length/kerb on paving sand base. (See Engineers Spec.)

Supplier: Acheson & Glover - 127 Crievehill Road, Fivemiletown, BT75 0SY.

Office internalsales@ag.uk.com. Sales Rep. gareth.mcbrearty@ag.uk.com

Mob: M +353 (0)87 234 1965 Web: <http://www.ag.uk.com>



SURFACE TREATMENT 10 – Creche Play Surfacing.

RMDA Ref: Dwg.01. Landscape Masterplan.

Location: Creche Outdoor Play Area.

Material: Wet Rubber Pour. 20mm Depth Wetpour Top layer, 50mm Depth Wetpour Base Layer, blinding 50mm Depth. Sub base 150mm Depth compacted. EN 1177 Standard.

Supplier: Kompan Ireland Ltd. Galway Technology Centre, Mervue Business Park, Galway. H91 T020.

Sales Manager: Martin Carey. Tel: 091 704844. Mob: 087 2166473.



SURFACE TREATMENT 11 – Private Rear Garden Footpaths.

RMDA Ref: Dwg.01 Landscape Masterplan.

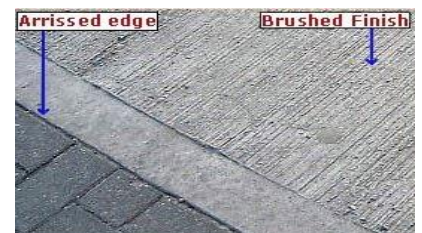
Location: Side & Rear House Access.

Material: Concrete brushed finish with trowelled edge.

Build-up to Engineer's Specification.

Supplier: Roadstone - Roadstone Retail Belgard, Tallaght, Dublin, D24 PKK2.

Rep. Conal Bailey 0878259470, Office 01 4041275 or equivalent.



SURFACE TREATMENT 12 – Natural Openspace Play Areas.

Engineered Woodchip Mulch (EN1177 Playground Surfacing)

RMDA Ref: Dwg.01 Landscape Masterplan.

Description: Engineered Woodchip Mulch.

The fibres knit together to form a stable, Long-lasting, slip resistant surface, giving excellent absorption against impact.



Mypex Mulch Material 10M X 2M Roll.

RMDA Ref: Dwg.01 Landscape Masterplan. Description: Mypex laid under Woodchip.



25mm Blinding.

RMDA Ref: Dwg.01 Landscape Masterplan.

Description: Blinding to be spread on Drainage stone.



50mm Round Drainage Stone.

RMDA Ref: Dwg.01 Landscape Masterplan.

Description: Drainage Stone.



100mm Perforated Land Drainage Pipe.

RMDA Ref: Dwg.01 Landscape Masterplan.

Description: To Be used in play Areas.



Treated Timber Edging

RMDA Ref: Dwg.01 Landscape Masterplan.

Description: Tanalised Timber Edging 100 x 44mm
Timber Edging to Woodchip.



Site Works.



Removal of Top-
Soil, Level site,
Stone and blind
site, assume
excavation and
formation of levels

Safa Grass Matting (E11177 Safety Standard)

RMDA Ref: Dwg.01 Landscape Masterplan.

Description: Safa grass is rubber matting that is installed onto existing grass. The grass then grows up through the holes in the mats and can be mowed and maintained as normal. The mats are kept in place with special pins and are easily installed. On particularly wet or sloping sites, a stabilising mesh can be installed underneath the safa grass to ensure that it remains properly in place.

Safa grass is ideal for green field sites and disappears from view once the grass grows. Safa grass can be used for a critical fall height up to two metres.

Size: 1m x 1m x 23mm, 1m x 1.5m x 23mm, (Can be easily shaped to fit).

Supplier: Kompan or equivalent.

**SURFACE TREATMENT 13 – Drainage Stone.**

RMDA Ref: Dwg.01. Landscape Masterplan.

Location: Against Buildings.

Material: Ballylusk Chip. 10-20mm chip. Depth 50mm.

6mm Clean Grit (no fines).

50mm Perforated Drain Pipe Wrapped in Mypex

Supplier: See Engineers Specification.

**Tactile Paver**

RMDA Ref: Dwg.01. Landscape Masterplan..

Location: Crossing points in non shared surface areas, and hazard identification.

Material: 400 x 400 x 50mm, exposed aggregate, buff colour or equivalent, 50mm depth bedding sand, 3mm sand in joints using proprietary jointing sand, as approved by Landscape Architect.

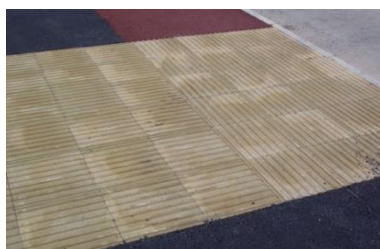
Build up to Engineer's Specification.

Pattern: All laid to checker board, stack bond to tie into adjacent paving slab joints. To Engineers Spec.

Supplier: Acheson & Glover - 127 Crievehill Road, Fivemiletown, BT75 0SY.

Office internalsales@ag.uk.com. Sales Rep. gareth.mcbrearty@ag.uk.com

Mob: M +353 (0)87 234 1965 Web: <http://www.ag.uk.com>



Bullnose Kerb Setts

RMDA Ref: See Rationale – Typical House Paving Treatment.

Material: Slate Smooth.

Size: H 200mm x D 127mm x L 100mm.

Supplier: Acheson & Glover.



Recon Natural Granite Kerb

RMDA Ref: See Rationale – Typical House Paving Treatment.

Material: TerraKerb Reconstituted Pearl Silver Grey Kerb.

Size: Height 255mm x Depth 125mm x Length 900mm.

Supplier: Acheson & Glover.



Flat Top Pin Kerb Edging.

RMDA Ref: See Rationale.

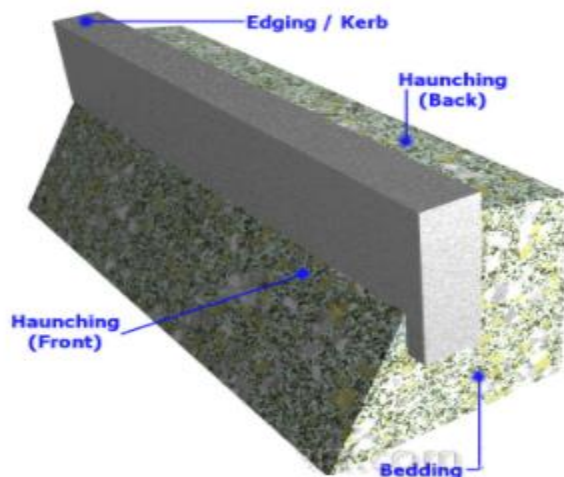
Location: Against Play Area Wet RubberPour or Optional Edging Along Openspace Paths

Material: Precast concrete flat top pin kerb.

Size: 150 x 50mm. Length: 900mm.

Pattern: NA

Supplier: Acheson & Glover



Acco Channel

- Rmda Dwg 01
- At all entrance doors.
- Filcoten Tec

System FILCOTEN tec 100

length 1000 mm

overall width 130 mm

nominal width 100 mm

slope with or without slope

overall height channel Nr. 0 135 mm
 channel Nr. 10 185 mm

weight without grating

 channel Nr. 1 ca. 13.4 kg

 channel Nr. 10-0 ca. 18.7 kg

- Perforated Grating A – see image with perforated grating cover
- Load Classification C250 to D400



Perforated Grating



Supplier : Proflo

- Brennan's Yard,
College Lands, Rathcoole, Co. Dublin, D24 T293.
Tel: +353 (0)1 257 0388

Cellweb Tree Root Protective System

- RMDA Ref: Dwg 08 Path Treatment Through Rootzone.
- Location: OpenSpace to East of Proposed Development..
- Material: High Quality, High Strength Polyethylene with a textured surface and perforated walls
- Build-up to Engineer and Geo-coastal Specification.
- Supplier: Geo-coastal Engineering Ltd, Tel: 01-9060333 Web: <https://www.geo-coastal.ie>



Apartment Area - Natural Playground Items

Natural Play Item 1.

RMDA Ref: See Landscape Rationale.

Description: Natural Play Item 1 – Crawling Pyramid.

Age: 4+

Material: Robinia.

Qty: 1.

Supplier: Kompan/Buglo or Similar Approved.



Natural Play Item 2.

RMDA Ref: See Landscape Rationale.

Description: Natural Play Item 2 – Playhouse.

Age: 6+

Material: EcoCore & Plywood covered in 2 layers of phenolic film.

Qty: 1.

Supplier: Kompan/Buglo or Similar Approved.



Openspace Area - Natural Playground Items

Natural Play Item 1.

RMDA Ref: See Rationale.

Description: Natural Play Item 5 – Embankment Slide.

Age: 6-12

Material: EcoCore, Galvanised Steel, Moulded PE.

Qty: 1.

Supplier: Kompan/Buglo or Similar Approved.



Natural Play Item 2.

RMDA Ref: See Rationale.

Description: Mound & Tunnel.

Age: 3-12

Material: EcoCore.

Installation to Supplier Specification.

Qty: 1.

Supplier: Kompan/Buglo or Similar Approved.

Kompan Ireland Ltd. Galway Technology Centre, Mervue Bus. Park, Galway, H91 T020.

Sales Manager – Martin Carey Mob:087 2166473, Tel: 091 704844.



Natural Play Item 3.

RMDA Ref: See Rationale.

Description: Play Tree Trunk with Major Branch Structures.

Age: 4+

Material: EcoCore.

Installation to Supplier Specification.

Qty: 1.

Supplier: Kompan/Buglo or Similar Approved.

Kompan Ireland Ltd. Galway Technology Centre, Mervue Bus. Park, Galway, H91 T020.

Sales Manager – Martin Carey Mob:087 2166473, Tel: 091 704844.



Climbing Rocks



RMDA Ref: Dwg.01 Landscape Masterplan.

Description: Roadstone Huntstown Quarry Rocks. (Natural Grey Colour).

Size: 600mm x 120mm x 800mm.

1.2M x 1M x 1M.

Supplier: Roadstone - Roadstone Retail Belgard, Tallaght,
Dublin, D24 PKK2. Rep. Conal Bailey 0878259470,
Office 01 4041275
or equivalent.

Playground Suppliers

Browne Brothers
Loughlee
Carrigadrohid,
Co. Cork.
E: reino@brownebrothers.ie
www.brownebrothers.ie
026 48834 – Office.
087 340 6136 – Mobile

Spec was provide by Reino Lotz.
Senior Designer & Estimator.



JJ Browne
jj@brownebrothers.ie
info@brownebrothers.ie

Spraoi Linn

Ballygarran House,
Kilmuckridge,
Co. Wexford.
Ireland.

t: [+353 53 9130491](tel:+353539130491)
f: [+353 53 9130490](tel:+353539130490)
m: [+353 87 6244620](tel:+353876244620)
e: info@spraolinn.com
w: www.spraolinn.com

Conor Burke
conor@spraolinn.com

Ella Meyer

Playground Designer
EIMey@Kompan.com

Kompan Ireland Ltd

Galway Technology Centre,
Mervue Business Park,
Galway H91 T020
+353 91 704844



Let's play at Kompan.ie | Facebook | Twitter

Martin Carey
Sales Manager
MarCar@Kompan.com
Tel: 00 353 91 704844
Mob: 00 353 87 216 6473

STREET FURNITURE

Seating



- RMDA Ref: Dwg 1 Landscape Masterplan
- Description: HC2000S Seat
- Stainless steel, timber and cast ductile iron seat with back support and arm rests. Supports and frame are manufactured from 316 grade stainless steel (corrosion and salt water resistant). The vertical stainless steel supports are bead blast finish and the frame is electro-polished finish. Timber slats are 70 x 50mm FSC approved mahogany treated with a protective wood stain coating. Fixtures and fittings are stainless steel
- Options: Supports to be flange mounted.
- Supplier: Hartecast or equivalent.
Hartecast Street Furniture, Clonroche, Enniscorthy, Co. Wexford, Y21 X525.
info@hartecast.com, Tel - 051 424922.

Bins

RMDA Ref: Dwg 1 Landscape Masterplan

- Description: HC2057 - 120 litre Litter Bin
- Manufactured from 12mm cast ductile iron with 316 grade stainless steel. 120 Litre capacity, angled top, cast ductile iron litter bin. Round in shape with 1 litter posting aperture. Stainless steel aperture rim to protect paint work and prevent chipping.
- Size: 1240 x 480mm.
- Options: Range of colours, Galvanised liner, Advertising panel, Levelling base plates & Refurbishment service
- Supplier: Hartecast or equivalent.
Hartecast Street Furniture, Clonroche, Enniscorthy, Co. Wexford, Y21 X525.
info@hartecast.com, Tel - 051 424922.



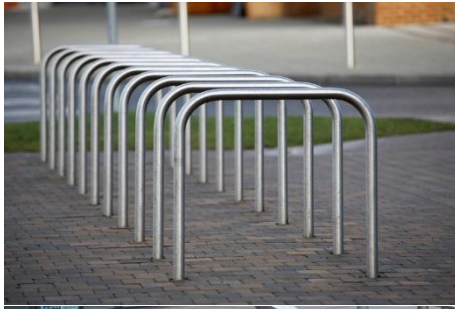
Bollards (At Entrance to Shared Pedestrian/Cycle Path)

- RMDA Ref: Dwg 1. Landscape Masterplan
- Description: HC2011 Bollard
- Size: Diameter/wall thickness 114/4mm. Length 900mm above ground & 300mm Below.
- Options: Fixed & Removable versions with retention socket.
- 316 grade Stainless Steel with cast stainless steel collar & cap. Contrast Colour top pipe (Powder coated) can be 50mm/100mm/150mm.
- Supplier: Hartcast, Omos or equivalent.



Bike Stands

- RMDA Ref: Dwg 1. Landscape Masterplan - Roof Plan, Dwg 2. Landscape Masterplan - Ground Floor Plan & Dwg 16. Street Furniture Plan
- Description:
 1. HC2085 Cycle Stand - Stainless steel curved cycle stand with angled top upright. 316 grade. Recommended concrete foundation 400x400x150mm per support.
 2. s36 cycle stand - galvanized mild steel
- Size: Vertical pipe is 101mm diameter with a 3mm thickness and curved pipe is 50mm with a 2mm thickness. 900mm over ground level and 300mm underground level
- Options: Base plates are available if required.
- Galvanized & painted.
- Supplier: Hartcast, Omos or equivalent.



Boundary Treatments

Boundary Treatment 1

Feature Wall (2M High) Finish To Architects Spec.

RMDA Ref: Dwg. 02 Boundary Plan & Details (Boundary Treatment 1).

Location: Side of Garden Facing onto Public Realm.

Material: 2M high 215mm concrete block wall with Brick

Finish with rendered plinth with concrete capping to public realm.

Block Wall with Rubbed Joints or Rendered To own curtilage.

Foundation to Engineers specification.

Boundary Treatment 2

Timber Panel Fence.

RMDA Ref: Dwg. 02
Treatment 2).

Location: Rear of

Material: Wood,
H Post Set into ground,
to Engineers

Panel 150 x 50mm x
150 x 18mm Tongue
1500mm High, atop
300mm x 50mm.

fence. Gravel Board

Product: Riga 1 (Clonee
(Independent Fence

Clonee Sawmills Ltd, Dunboyne Rd, Loughsallagh, Clonee, Co. Meath, D15 NX56.

Tel: 01 8252017. Email: info@cloneesawmills.ie



(1.8M High).

Boundary Plan & Details (Boundary

Proposed Units.

galvanized bolts/ screws. Concrete
lean mix/specification

Specification. Solid treated wooden
18mm treated wooden frame,
and groove treated boards.

concrete gravel board 2000mm x
Treated D Rail 100 x 50mm to cope
300mm high.

sawmills) Betula range
Manufacturers) or equivalent.

Material: Treated Timber with Tanalith E.
Supplier: Clonee Sawmills Ltd or Independent Fence Manufacturers or equivalent.
Clonee Sawmills Ltd, Dunboyne Rd, Loughsallagh, Clonee, Co. Meath, D15 NX56.
Tel: 01 8252017. Email: info@cloneesawmills.ie



Boundary Treatment 4

Parkland Railing (1.2M High 3 Bar).

RMDA Ref: Dwg. 02 Boundary Plan & Details.

Location: House Front Boundary & Openspace boundary.

Material: Metal fence 1.2M high Post, Galvanised Metal 75 x 75mm upright box post fixed/set into wall lean mix or equivalent to Engineer specification, Powder coated Black. 20mm Galvanized Metal upright bars @ 100mm centres Bar threaded through galvanized 50 x 20mm upright Post horizontal bar x 3 – powder coat black.

Product : 1.2M Metal Fence to BS 792.

Supplier: Brendan Buggy Steel Fabrication, 01 4018234, email info @bbsf.ie, or equivalent.

Number : As per drawing.



Boundary Treatment 5

Site Entrance Feature

RMDA Ref: Dwg. 02 Boundary Plan & Details.

Location: Development Vehicle Entrances.

Material: Selected Stone.

Foundation to Engineers specification.

Product : Limestone.

Supplier: Monagle Stone or equivalent.

McMonagle Stone, Cloghran, Swords, Co. Dublin, K67 FK80.

Tel: 01 8079079. Website: www.mcmonaglestone.com

TREE PLANTING MATERIALS

Tree Staking.

- RMDA Ref: Service Dwg. 01 Landscape Masterplan.
- Location: Grass/Planting Areas.
- Spec: - Single, pressure treated timber stake positioned on side of prevailing wind.
35mm SRC Rubber Collar. 75mm Drainage pipe to surround rootball for watering.
 - Double, pressure treated timber stakes & brace provide support to the tree. Secured approximately 450mm above the ground. Tree trunk supported with 50mm SRC Rubber strap fixed with 4 galvanised tacks. 75mm Drainage pipe to surround rootball for watering.



URBAN TREE PIT

Root Barrier. ReRoot 600/1000

RMDA Ref: Service Dwg. 01 Landscape Masterplan.

Location: Grass Margin Tree Planting Near Services.

Material: Durable High-Density Polyethylene Ribbed or equivalent. Install with ribs facing the roots.

Size: Depth 600mm & 1M. Supplied in roll form to any 10 lin/m increment. (Use Reroot jointing Tape when jointing root ends).

Supplier: Green Leaf Ireland, 1a Carrakeel Drive, Maydown Industrial Estate, Maydown, Derry.

BT47 6UQ

Tel: 028 71345620. Email: sales@greenleafireland.com

Website: www.greenleafireland.com

